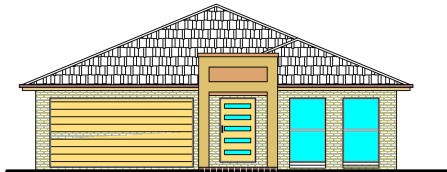
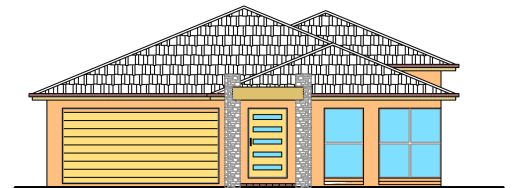


Traditional Facade



Nouveau Facade + \$6,000



Modern Facade + \$10,000

# The Aspire 28

# \$199,900

- Raised ceilings to kitchen, family & dining
- Stunning alfresco entertaining area
- Main bedroom access to alfresco
- 4 bedroom with built-ins
- Ensuite to main
- Double garage
- Corner bath

Garage: 32.1  
 Porch: 5.4  
 Alfresco: 13.2  
 Ground floor: 202.9

Total area: 253.6sqm = 27.5sq

Alison Abel  
 (02) 9629 5444  
 0434 511 711

[alison@ferntreehomes.com.au](mailto:alison@ferntreehomes.com.au)

[www.ferntreehomes.com.au](http://www.ferntreehomes.com.au)

